

THPS-1000-12  
THPS-2000-12  
THPS-3000-12

THOR POWER THOR TOUGH

## POWER INVERTERS

### THOR Pure Sine Wave Inverters

THOR Pure Sine Wave inverters have set the standard with the way you deal with your mobile power needs, providing AC electricity. A power inverter converts the DC electricity from batteries into everyday AC power. With a THOR inverter you won't need to rely on DC-powered electronics or a generator to have power for tools, electronics, or any AC power needs.

THOR Pure Sine Wave inverters are efficient and dependable and come in numerous sizes and power ranges to meet your mobile power demands. We offer compact, higher powered models that yield enough power for larger vehicles such as utility & work trucks, RV's, boats, & renewable energy applications.

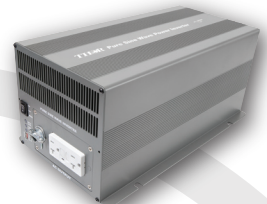
### Design Features

- ❖ Pure Sine Wave (THD <3% Typical)
- ❖ 88-89% Efficiency
- ❖ Full Protections (Overload, Short circuit, Ground Fault, Over Temperature)
- ❖ Power Save Mode
- ❖ GFCI Outlets or Hardwire (2000 & 3000 only)
- ❖ On/Off Switch to conserve power
- ❖ Mounting feet for easy installation
- ❖ Optional remote control function
- ❖ Nominal output voltage 115 VAC.
- ❖ 2 Year Warranty



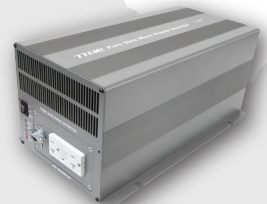
**THPS-1000-12**

1000 WATT - 2000 WATT PEAK



**THPS-2000-12**

2000 WATT - 4000 WATT PEAK



**THPS-3000-12**

3000 WATT - 6000 WATT PEAK

### Applications

- ❖ RVs and Campers
- ❖ Long Haul Trucks
- ❖ Mobile Office
- ❖ Service Vehicles
- ❖ Back-up Power
- ❖ Utility Trucks

All Power Supply Inc.  
3125 NW 25th Ave  
Pompano Beach, FL 33069  
877.251.4446  
sales@allpowersupply.com

[www.thorpowerproducts.com](http://www.thorpowerproducts.com)

Model	THPS-1000-12	THPS-2000-12	THPS-3000-12
Continuous Output Power	1000W	2000W	3000W
Peak Output Power	2000W	4000W	6000W
No load current (DC input static current)	1.43 Amp	2.8 Amp	3.0 Amp
Standby Current Draw (Max)	.25 Amp	.60 Amp	.55 Amp
AC output wave form	Pure Sine Wave	Pure Sine Wave	Pure Sine Wave
Input voltage	12.0V	12.0V	12.0V
Over voltage shut-down	15V +/- 0.5V	15V +/- 0.5V	15V +/- 0.5V
Low voltage alarm	11V	11V	11V
Low voltage cut-off level	10.5V	10.5V	10.5V
Output AC voltage	115V	115V	115V
Output frequency level	50/60±3Hz	50/60±3Hz	50/60±3Hz
Over load protection	Yes	Yes	Yes
Temperature protection	Yes	Yes	Yes
Full load efficiency	Approx 89%	Approx 89%	Approx 89%
AC output short circuit protection	system shut down (no damage)	system shut down (no damage)	system shut down (no damage)
Temperature Protection	≥45 oC	≥45 oC	≥45 oC
LED indicate	input level, low level, status	input level, low level, status	input level, low level, status
Optional Remote	Yes	Yes	Yes
Cooling Fan	Yes	Yes	Yes
Unit dimension (L*W*H)	13.39*7.17*3.46"	14.49*8.23*6.53"	14.49*8.23*6.53"
Unit weight (Net)	8.8lbs	19.8lbs	19.8lbs
Warranty	2 Years	2 Years	2 Years

\*\* Optional models in 24V input and 220VAC output are available by special order only.

## Inverter Remotes



**TH-R6**

Applicable Models :

THPS 1000/2000 / 3000



**TH-R8**

Applicable Models :

THPS 1000/2000 / 3000